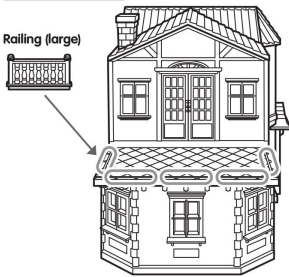


Attaching the Parts

Attaching the railings (large)

○ Positions for attaching the railings (5 places)

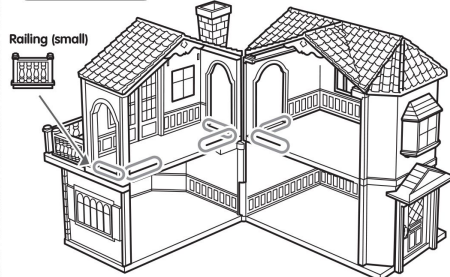
Railing (large)



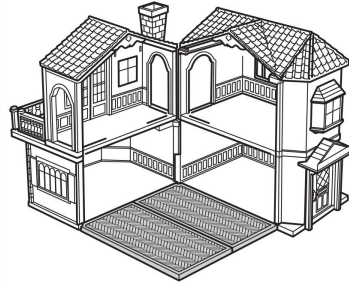
Attaching the railings (small)

○ Positions for attaching the railings (6 places)

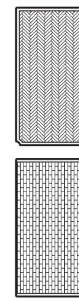
Railing (small)



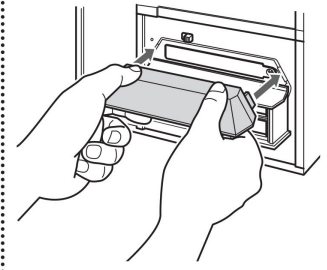
Examples of floor layouts



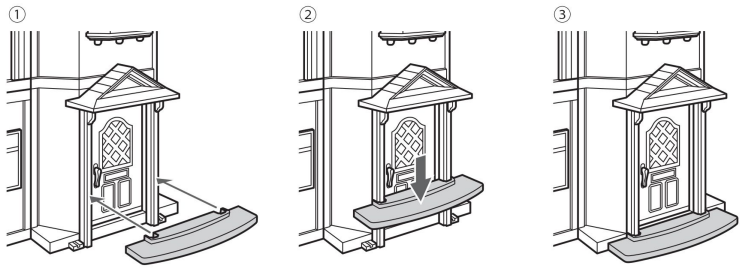
Both sides can be used



Attaching the bay window roof



Attaching the entrance porch

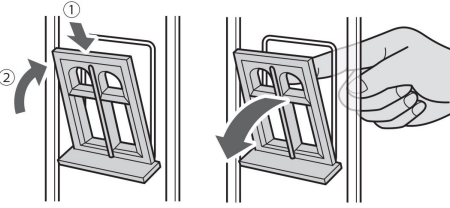


Attaching and removing the windows

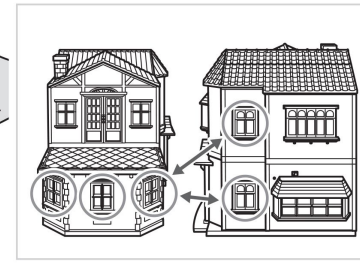
○ Positions for attaching the windows (5 places)

Attaching the window

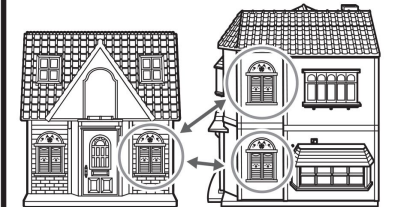
Removing the window



The different windows can be attached in any of the positions, as desired



Attaching the windows of the Red Roof Cozy Cottage Starter Home (sold separately)

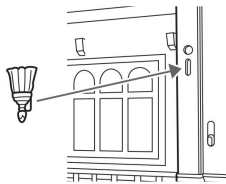
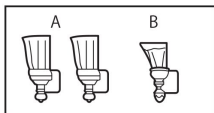


Red Roof Cozy Cottage (Sold separately)

Red Roof Country Home

Attaching the lampshades

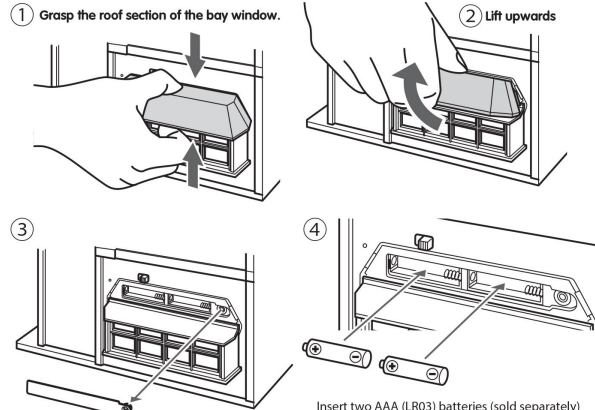
Attach the lampshades to the walls of the ground floor and second floor, as shown on the diagram. There are two types of lampshades.



○ Positions for attaching the lampshades (3 places)



Inserting the batteries



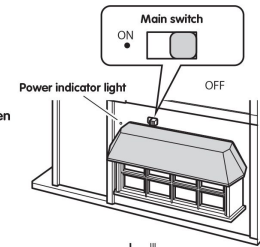
Use a cross head screwdriver to remove the screw of the battery compartment lid, then open the lid

Insert two AAA (LR03) batteries (sold separately) as shown on the diagram, then close the battery compartment lid and tighten the screw. Be sure to insert the batteries in the proper positive/negative (+/-) direction, and always insert the negative (-) side of the battery first.

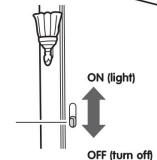
- Use two AAA (LR03) batteries (sold separately)
- Use alkaline batteries. Battery service life: Approx. 40 hours when lit continuously (with alkaline batteries).
- The indicated battery service life is for when using new alkaline batteries (1.5V). The service life may be shorter, depending on the usage conditions, the type of battery and the battery capacity (for example, under 1.5V).

About the switches

[Main switch]
The main switch turns on when slid to the left, off when slid to the right. When the main switch is on, the power indicator light on the left lights.



[Lampshade switches]
There are lampshade switches on both the ground floor and second floor. The switch turns on when moved to the top, off when moved to the bottom.



[Cautions]

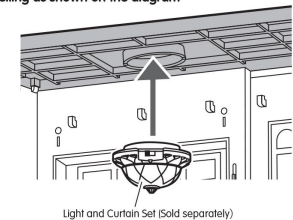
When the main switch is on, power is supplied even if the lampshade switches are off. Be sure to turn off the main switch on the main building after you finish playing.
• Turn off the lampshade switches on both the ground floor and second floor before attaching and removing the lampshades.
Please note that the LED cannot be replaced. If the LED does not light, replace the batteries with new ones.

BATTERY CAUTIONS:

- Do not mix old and new batteries.
- Do not mix alkaline, standard (carbon-zinc), or rechargeable batteries.
- Do not use rechargeable batteries.
- Non-rechargeable batteries are not to be charged.

Attaching the light from the Light and Curtain Set (sold separately)

Attach the light to the top of the ceiling as shown on the diagram



Light and Curtain Set (Sold separately)

○ Positions for attaching the lights (4 places)

